

DEMARK

德玛克PET瓶坯注塑模具和EOAT

PET Preform Injection Mold and EOAT



德玛克控股集团

地址: 中国浙江省湖州市长兴国家级开发区发展大道2587号
电话: 0572-6559071, 13776090716
邮箱: sales@demark-pet.com

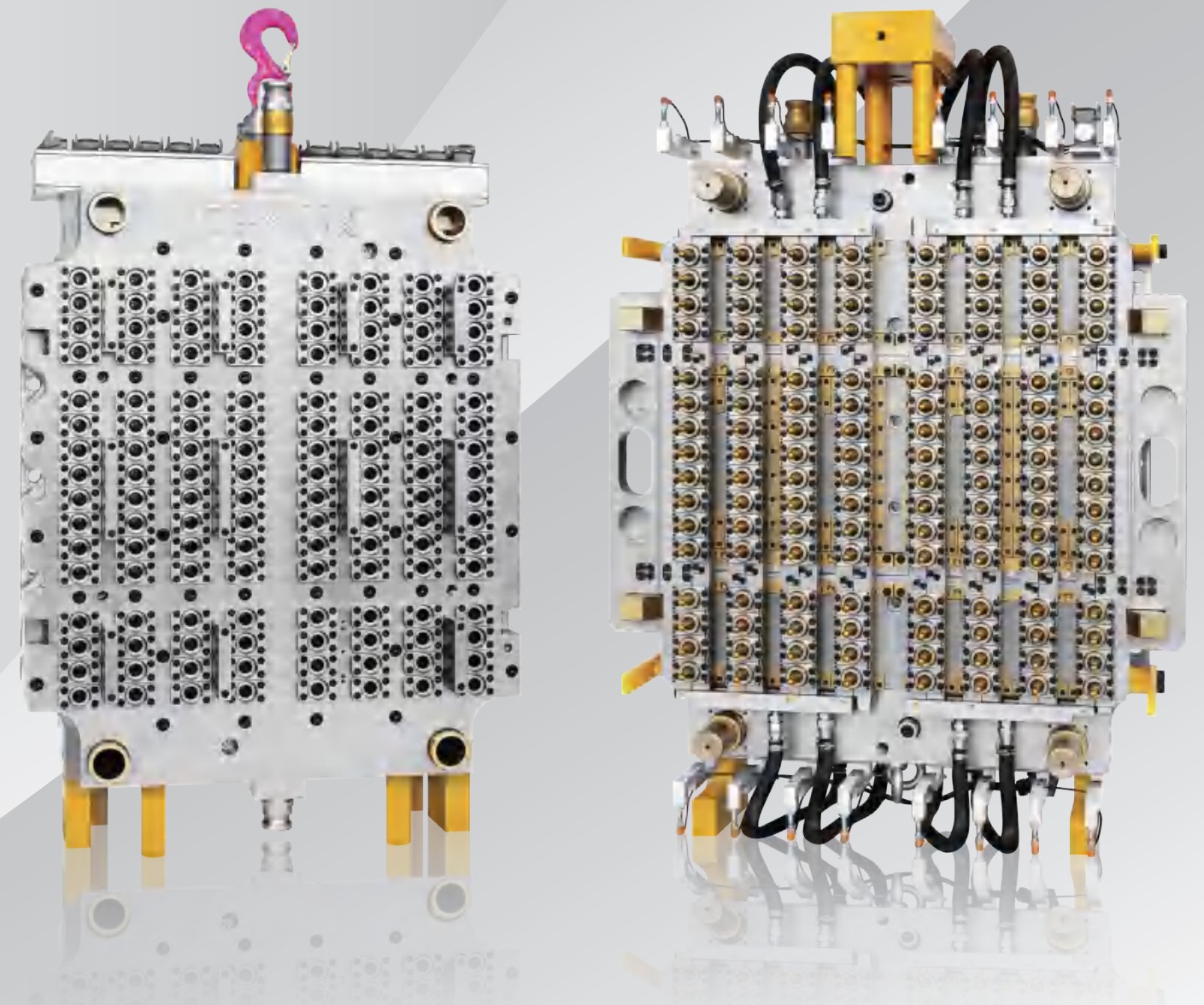
DEMARK HOLDING GROUP

Add: No. 2587, Development Avenue, Changxing, Huzhou,
Zhejiang Province, China
TEL: +86-572-6559071, +86-13776090716
EMAIL: sales@demark-pet.com

www.demark-pet.com

ISO9001 & CE

◇ Copyright DEMARK CO., LTD. Information subject to alteration. 2024-02版
◇ 由于印刷的关系, 故正式机器的颜色与所示的图片有部分差异, 一切以机器实样为准。



EXCELLENT R&D AND DESIGNING CAPABILITY

优秀的研发设计能力

01 ADVANTAGES OF COLD HALF DESIGN

冷半模设计优势

每一套模具都经过严谨的冷半模冷却验算，冷却效果是普通模具的三倍以上。
Each set of molds has undergone rigorous cooling calculation of the cold half, and the cooling effect is more than three times that of ordinary molds.

模芯板2S冷却，且自带吹气功能。
The mold core plate is by 2S cooling design and has air blowing function.

模腔板4S冷却，且会根据不同瓶坯进行冷却模拟以更好适应不同坯形。
The cavity plate is by 4S cooling design, and cooling simulation will be carried out according to different preforms to better adaption.

螺口采用W型水道，冷却效果极佳。
The neck ring adopts W-shaped water channel, which has excellent cooling effect.

自带回归位滑块，保证模具精度，延长使用寿命。
The closing cam system ensures the accuracy of the mold and prolongs the service life.



02 ADVANTAGES OF HOT RUNNER DESIGN

热流道设计优势

热流道超平衡设计，每个流道转角90度圆角设计，以达到最佳的填充平衡。
Hot runner super balance design, each runner corner 90 degree fillet design to achieve the best filling balance.

通过专业的模流分析软件设计流道大小，保证流道压力适中。
Design the runner size through professional mold flow analysis software to ensure moderate flow channel pressure.

到达每一腔的路径，压力，射胶量都保持一致。
The path to each cavity, the pressure, and the amount of injection are consistent.

热流道模板依据分流板外型设计，增加紧固螺丝，长期使用不容易翘曲变形，不容易造成漏胶。
The hot runner plate shape is designed according to the manifold, and fastening screws are added. It is not easy to warp and deform for long-term use, and it is not easy to cause leakage.



03 EOAT

德玛克提供不同模具间距高达四工位的取出冷却手掌板
Demark provides EOAT with different mold pitch up to four stations



FIRST-CLASS HARDWARE 一流的硬件条件

01 TOP MOLD MATERIALS 顶级的模具材料

成型件采用欧洲顶级不锈钢材料，且经过原厂热处理和时效处理，保证高频率和高强度使用要求。

The shaping parts are made of top European stainless steel materials and have undergone original heat treatment and aging treatment to ensure high frequency and high strength use requirements.

模板材料采用4Cr13不锈钢，防锈及耐腐蚀性能出色，板材硬度HRC35-40，经时效处理，消除应力，长期使用不会变形，平面磨床精度达0.01mm。

The mold plate material is made of 4Cr13 stainless steel, with excellent anti-rust and anti-corrosion properties, HRC35-40 hardness of the plate, stress relief after aging treatment, long-term use will not deform, and the accuracy of the surface grinder reaches 0.01mm.

喷嘴组件采用进口零部件，与欧美模具同源配置，保证热流道使用长期稳定。

The nozzle stack adopts imported European and American parts to ensure long-term stability of hot runner use.

02 CONSTANT TEMPERATURE WORKSHOP ENVIRONMENT 恒温车间环境

德玛克致力于打造世界级的恒温恒湿模具加工车间，保证材料在稳定的环境下满足严苛的精度标准。

World class stable temperature mold processing workshop. Ensure the strict precision standards in a perfect manufacturing condition.

03 WORLD-CLASS PROCESSING EQUIPMENT 世界级加工设备

模具开粗即使用高精度CNC设备，即使在成型初级阶段我们也不妥协。

High-precision CNC equipment is used for rough machining and we will not compromise even in the initial stage of molding.



GERMANY DMG 德国德玛吉

用于加工型腔
For machining cavities



SWISS ARCHIE CHAMIL EDM 瑞士阿奇夏米尔火花机

用于加工模唇螺纹
For machining neck ring thread



JAPAN YASUDA 日本雅世达

用于加工热流道板
For processing hot runner plate

RICH INDUSTRY EXPERIENCE

丰富的行业经验

01 PRODUCTION CAPACITY OF 1-144 CAVITY

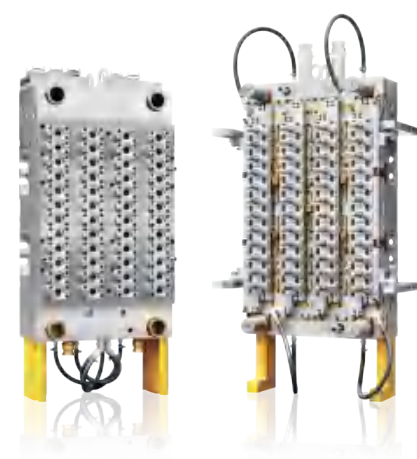
1-144腔的生产能力

规格：1-16腔、24腔、32腔、48腔、72腔、96腔、128腔和144腔瓶坯模具；
Specifications: 1-16 cavity, 24 cavity, 32 cavity, 48 cavity, 72 cavity, 96 cavity, 128 cavity and 144 cavity perform molds;

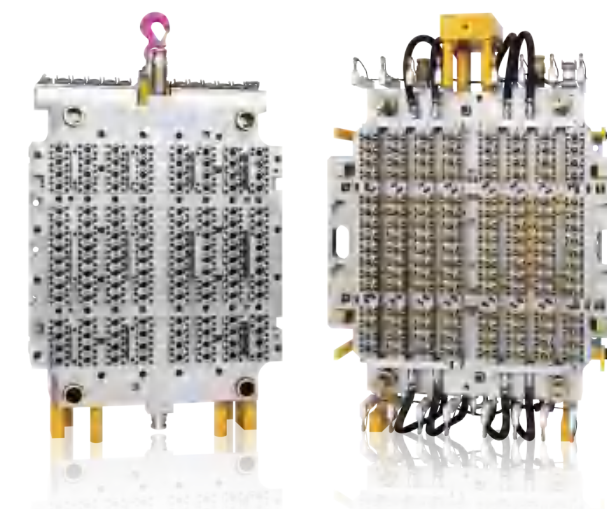
瓶口规格：ROPP、ALASKA、PCO1810、PCO1811、BPF、30/25、29/25、26/22、38mm、50-150mm等规格。
Neck specifications: ROPP, ALASKA, PCO1810, PCO1811, BPF, 30/25, 29/25, 26/22, 38mm, 50-150mm, etc.



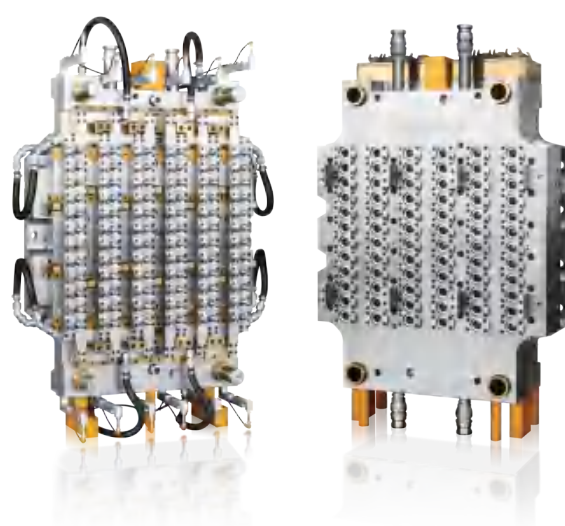
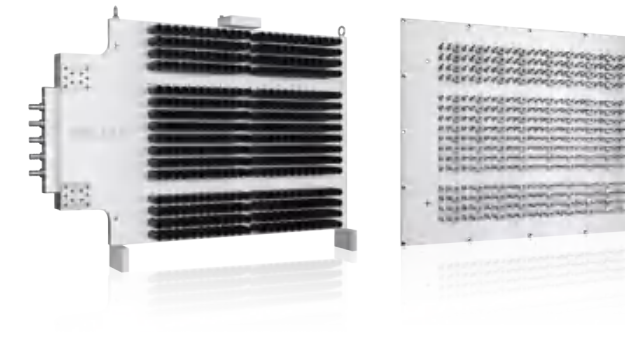
24 腔/Cavity



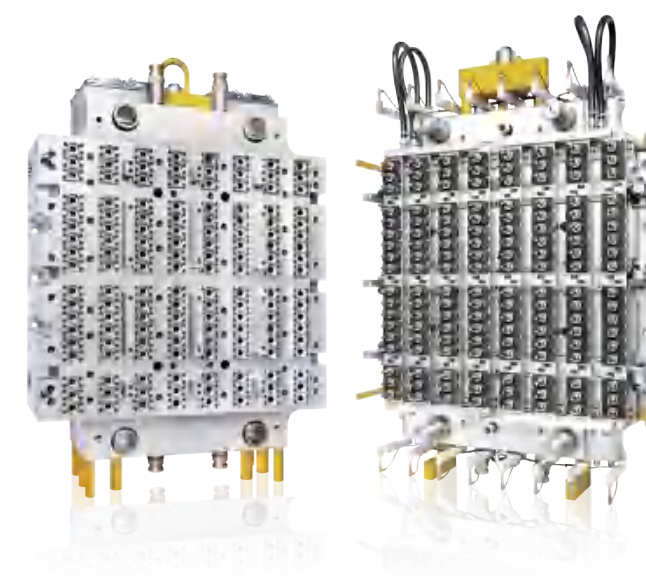
48 腔/Cavity



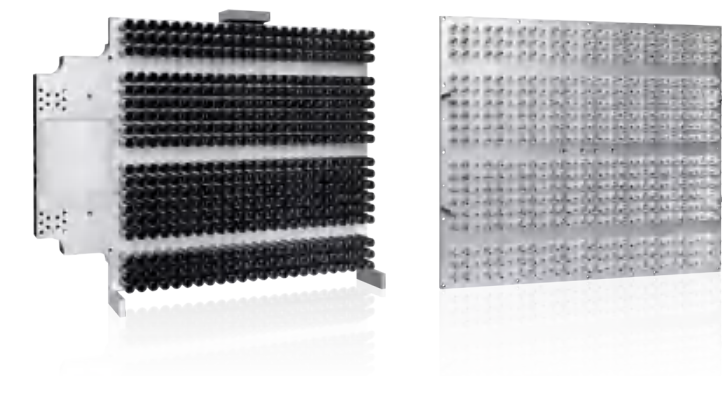
128 腔/Cavity



72 腔/Cavity



144 腔/Cavity

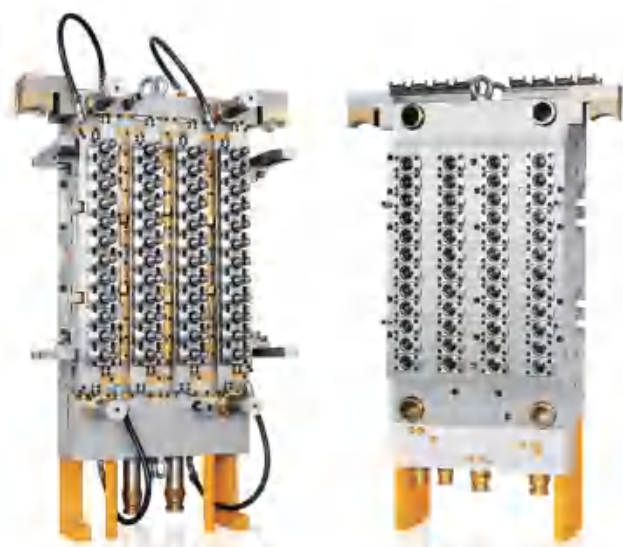




02 THE COMPLETE MOLD OR COLD HALF FOR OAVIOUS MACHINE PLATFORMS 其他机台的整模或冷半模

我们提供适用于HUSKY、NETSTAL、SIPA、KraussMaffei等专用设备的整套模具和冷半模。

We provide a complete set of molds and cold half molds suitable for HUSKY, NETSTAL, SIPA, KraussMaffei and other special equipment.

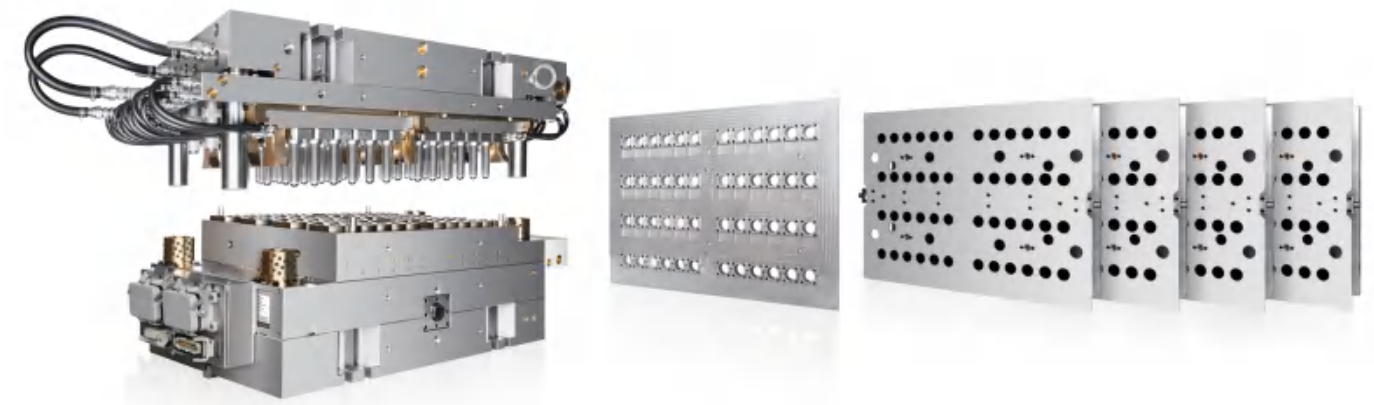


适用于NETSTAL PET-LINE平台的48腔瓶坯模具
48 cavities preform mold for NETSTAL PET-LINE platform

03 VERTICAL MOLD 立式模具

隆重介绍德玛克推出的适用于KraussMaffei PETform平台的立式瓶坯注塑模具。

The vertical preform injection mold for KraussMaffei PETform platform by Demark



04 MOULD CONVERSION AND REFURBISHMENT 模具改造和翻新

无论你是要瓶坯减重，或者是更换螺口，亦或者模具翻新，德玛克均可提供相应的改造和翻新服务，不仅包括德玛克自己的模具，也包括众多欧美品牌模具。如HUSKY、MHT、OTTO、SIPA等。

Whether you want to reduce the preform weight, replace the neck, or refurbish the mold, Demark can provide corresponding conversion and refurbishment services, including not only Demark's own mold, but also many European and American brand molds. Such as HUSKY, MHT, OTTO, SIPA, etc.

PERFECT SERVICE SYSTEM

完善的服务体系

” WE CARE ABOUT ALL YOUR PRODUCTION PROCESS.
我们关心您所有的生产环节

